

Vol. 8, No. 1 January 2007

# North Dakota Simmental Scene

Official Publication of the North Dakota Simmental Association



North Dakota Simmental Association  
6050 Old Highway 2  
Berthold, ND 58718

PRESORTED  
FIRST CLASS  
U.S. Postage  
PAID  
Permit No. 580  
Manhattan, KS

# Kenner Simmentals

## 11th Annual Production Sale

February 10, 2007 • Farmer's Livestock • Bismarck, ND

Selling 100 Bulls • 50 Bred Females



Full sib to Brooks Above Par

**KS The Duke S30**

Black Perfector x STF Rebecca

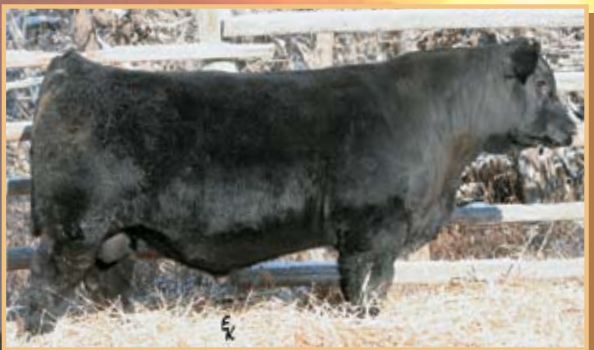
EPDs: 7 2 39 71 2 6 25



**KS Sundance Kid S28**

Dream On x KS Shania (Red Light)

EPDs: 9 0 38 67 2 11 30



**KS Jackson S238 SimAngus**

Sitz Tradition x KS Kayla (Preferred Stock)

EPDs: - 2 44 84 - 13 35



**KS Ranger S755**

KS Red Rock x KS Demmi (Perfector x Shania)

EPDs: 3 4 39 72 4 10 29



**KS Jesse James S426 SimAngus**

BCC Bushwacker x Nichols Legacy

EPDs: - -2 33 64 - 11 27



**KS Rikki R343**

Preferred Beef x Black Joker

EPDs: 5 -1 36 68 3 14 32

AI bred to GW Lucky Man.

For more information and to request a catalog, contact:



Roger, Jeanette, Erika, Jessica & Brett Kenner  
5606 57th St NE • Leeds, North Dakota 58346

Phone 701-466-2800 • Erika 406-581-1188 • kennerrj@gondtc.com  
Herdsmen: Bryan Leapaldt • 701-466-2553 • 701-739-8764 Cell

### Sale Consultant and Publication Representatives

Archie Fleming • 903-586-8505

Jeff Thomas • *The Prairie Star* • 406-581-8859

Kelly Schmidt • *the Register* • 406-599-2395

# North Dakota Simmental Association

## Board of Directors

**Kelly Hanson, President**  
11010 County Road 26  
Hannaford, ND 58448  
701-769-2241

**Greg Myers**  
5768 Valley Road  
Kathryn, ND 58049  
701-924-8297

**Pat Thorson, Vice President**  
16644 51st Street SE  
Kindred, ND 58051  
701-371-8230

**Robert Gannaway**  
14246 A 56th Street NW  
Williston, ND 58801  
701-875-6267

**Bob Grant, Secretary/Treasurer**  
6050 Old Highway 2  
Berthold, ND 58718  
701-453-3218

**Perry Thomas**  
Box 146  
Calvin, ND 58323  
701-697-5180

**Gary Sys**  
9400 205th Avenue SW  
Douglas, ND 58735  
701-722-3244

**Dwight Keller**  
1573 County Road 136  
Mandan, ND 58554  
701-445-7350

**Claye Kaelberer**  
4215 County Road 85  
New Salem, ND 58563  
701-843-8342

**Doug Bichler**  
130 83rd Street SE  
Linton, ND 58552  
701-254-4306

## President's Message...

*A very successful Simmental weekend in Bismarck was a great way to end the year. I would like to congratulate the award winners at this year's banquet. Hats off to all of these recipients for jobs well done.*

*I would like to thank a few people for all their help in making the Simmental weekend a success. Erika Kenner was a great help in putting together some of the presentation speeches & Kim Myers for putting together the photo contest. A special thanks to Bob Grant. For those who have served on the board, especially as president, you know how valuable he is. Bob does so much more than most people realize. Thanks also to all the consignors, sales management, sales consultants and to all the buyers that make the sale a success.*

*Putting a successful up & down year behind us and to the anticipation of a new one. It's always fun to look forward to a new year but wishing that the time would slow down a bit to enjoy a little more. Everyone at our ranch is always excited this time of year as we look forward to the new calving season and the upcoming bull sale. From Dad harping that we need to start sorting off the close ones, to the five boys that can't hardly wait for the first calves to be born and to Bryan & myself to get through the bull sale.*

*Here's to continued success in 2007.*

*NDSA President  
Kelly Hanson*

# North Dakota Simmental Scene

A publication of the North Dakota Simmental Association

Todd Finke, Sales  
35500 114th Avenue NW  
Berthold, ND 58718  
701-240-7711  
todd@edje.com

This issue of the North Dakota Simmental Scene is distributed to over 4300 Simmental and commercial cattlemen throughout 27 states and two Canadian provinces.

The following terms and conditions have been agreed on by the North Dakota Simmental Association Board of Directors and the North Dakota Simmental Scene Committee.

### Advertising Space Rates

Size	BW	4C
Full Page	\$400	\$500
½ Page	\$300	\$375
¼ Page	\$200	NA
Business Card	\$150 (per year)	

### Advertising Deadlines

Issue	Deadline
November	November 1st
January	December 20th
February	January 20th

### Terms

All advertising accounts are due and payable as invoiced. Interest charges of 1% per month will be assessed to accounts that are 30 days past due.

### Delinquent Advertiser's Account

Advertisers knowingly and expressly agree and consent that, whenever accounts receivable for an advertiser have not been paid as of 90 days from date involved, advertising privileges will be suspended until full payment has been received.

### Copy Changes

Alterations in advertising copy, if requested after closing dates will be permitted only if time allows.

The North Dakota Simmental Association and the North Dakota Simmental Scene reserve the right to refuse any advertising copy at our sole discretion. The North Dakota Simmental Association and the North Dakota Simmental Scene assume no responsibility for the accuracy of the advertising content submitted. Advertisers assume all responsibility for the accuracy and truthfulness of submitted advertising containing pedigrees or statements regarding performance.

### Editorial Content

Opinions expressed are those of the writer and not necessarily those of the North Dakota Simmental Association or the North Dakota Simmental Scene. Photographs and manuscripts are welcome, but no responsibility is assumed either while in transit or while in this office.

Produced by EDJE Technologies

About the Cover: It is Bull Sale Season in the upper Midwest!  
Photo taken at Keller's Broken Heart Ranch, Mandan, ND.

# Calendar of Events

## January

- 13-17 National Western Stock Show Simmental Events  
*Denver, CO*
- 15 National Western Simmental Sale "The One-Vol. XIV"  
*Denver, CO*
- 25-27 KMOT-TV Ag Expo Livestock Show  
*Minot, ND*
- 29 Spring Harvest Sale  
*Bismarck, ND*

## February

- 2 4E Simmentals' Uppin' the Ante Bull & Female Sale  
*Bismarck, ND*
- 3 Larson's TL Ranch Production Sale  
*Almont, ND*
- 3 Klain Simmental Ranch Annual Production Sale  
*Turtle Lake, ND*
- 5 Haas Ranch Production Sale  
*Mandan, ND*
- 6 Hoiby-Hystad Bullnanza Sale  
*Rugby, ND*
- 6 James Creek Simmentals Private Treaty Bull Sale  
*Heaton, ND*
- 6 Koepplin's Black Simmental Bull Sale  
*Mandan, ND*
- 7 Big Sky Genetic Source Bull Sale  
*Wibaux, MT*
- 9 TNT Simmentals Annual Bull Sale  
*Almont, ND*
- 10 Grass-Lunning Bulls-Eye Bonanza Sale  
*Lanesboro, MN*
- 10 Kenner Simmental Ranch 11th Annual Production Sale  
*Bismarck, ND*
- 11 Rydeen Farms Vision IX Sale  
*Clearbrook, MN*

## February continued

- 12 Dakota Power Bull Sale  
*Valley City, ND*
- 12 Traxinger Simmentals Bull Sale  
*Claremont, SD*
- 14 Wilkinson Annual Production Sale  
*Napoleon, ND*
- 15 Bichler/Johnson 2nd Annual Bull Sale  
*Linton, ND*
- 16 Dakota Xpress Simmental Sale  
*Bismarck, ND*
- 17 Ellingson Simmentals Production Sale  
*Rugby, ND*
- 18 Northern Plains Simmental Private Treaty Sale  
*Bowbells, ND*
- 20 Keller Broken Heart Ranch Annual Production Sale  
*Mandan, ND*

## March

- 2 LaBatte Simmentals 27th Annual Production Sale  
*Moose Jaw, SK*
- 6 Doll Ranch Annual Production Sale  
*Mandan, ND*
- 7 Bata/Olafson Annual Production Sale  
*Rugby, ND*
- 10 NW ND Select Simmental Sale  
*Stanley, ND*
- 11 7N Simmentals Annual Production Sale  
*Medina, ND*
- 26 Nelson Livestock Production Sale  
*Baker, MT*

## April

- 2 Kjelgaard Simmental Production Sale  
*Jamestown, ND*
- 6 Edge of the West Bull Sale  
*Mandan, ND*

## Don't Forget the Benefits of Crossbreeding for Your Commercial Customers

Printed with permission from Dr. Greg Lardy, NDSU Beef Cattle Extension Specialist

Commercial cattle producers are in the thick of poring over bull catalogs this time of year. Don't let them ignore the benefits of a well planned crossbreeding program in their beef herd as they prepare to make bull purchases. Commercial producers should take advantage of crossbreeding to improve productivity in their cow herds.

Crossbreeding offers many advantages to the commercial producer. Crossbred cows are typically more productive, have greater fertility, and produce heavier calves than purebred cows. In addition, traits like longevity and adaptability are enhanced in a well-planned crossbreeding program. Data from the USDA-ARS Meat Animal Research Center (MARC) in Clay Center, Nebraska indicate that crossbred cows are 25% more productive than purebred cows. About 2/3 of that advantage comes from the crossbred cow while 1/3 comes from the crossbred calf.

Heterosis or hybrid vigor is the term used to describe the increase in productivity when comparing the crossbred offspring to the purebred parents. Traits which benefit the greatest from heterosis are things like fertility, adaptability, and longevity.

Taking advantage of complementary traits in different breeds is another advantage in crossbreeding programs. Taking advantage of breed complementarity in designing a crossbreeding program will allow a combination of traits in the offspring which are superior to the parents. In the data from MARC, Hereford-Angus cross cows are moderate in frame size, milk production, and growth rate, making them well suited for a variety of production systems across the country.

Many commercial producers have become disenchanted with crossbreeding over the years. However, crossbreeding systems do not need to be complex to accomplish the desired objectives. A simple two breed rotational cross or a terminal sire program in which crossbred replacement females are purchased can simplify the systems and reduce the number of breeding pastures needed. A two breed rotational cross will offer 67% of the maximum heterosis possible, while the terminal sire system will offer 100% of the maximum heterosis possible.

Take the time to work with potential commercial customers this spring and emphasize the benefits of a well designed crossbreeding program.



# Farm Family of the Month

Written by Erika Kenner

## A Family Affair

Growing up on the family farm near McGregor, ND, Lyndon Hoiby had the opportunity to be involved in the local 4-H program. His cattle project started with registered Polled Herefords when he was 10-15 years old, until he saw Brian Ross's Simmental at the State Fair. Lyndon was hooked, and started raising Simmental in 1982. His dad always had some commercial cows, but Lyndon focused on the registered end, and he liked the performance from the Simmentals.

Lyndon attended college in Wahpeton where he majored in Agriculture and played football. He married Shelley, originally from Minot, and they moved back to the family farm near McGregor. They have two children, Paige, 13, and Levi, 10. The entire family helps on the farm and Shelley also works three days a week as the head of Medical Records at the Kenmare Hospital, as well as volunteering her time as the local 4-H leader.

The Hoiby's manage 175 registered Simmental cows and 50 registered Simmental heifers of which 125 cows and all the heifers are AI bred. Lyndon plans to continue building the Simmental herd through AI and embryo transfer work for the future. In addition to the cows, Lyndon also grain farms; primarily raising small grains and a few pulse crops, like peas and lentils. Just recently, he went to all zero-till, which is much more efficient and economical.

For years, the Hoiby's sold all the bulls by private treaty and consigned several lots to the Stanley Sale. About five years ago, they held their first sale in

Minot, and three years ago, joined with Jim Hystad for the Hoiby-Hystad Bullnanza Sale. In the past, the Bullnanza sale was held in Bismarck, but this year the sale will be in Rugby on February 6th.



Paige and Levi are both very involved in the family operation and are enjoying their time in the show ring. They attend as many shows as possible in the state and are members of the State Point Show Program. Paige has won in the past, but in 2006 Levi won both the Simmental and the Commercial divisions – the largest divisions of the Point Show competition.

Lyndon has been very involved in the cattle industry on the state level in several capacities. For six years, he was a North Dakota Simmental Association Board member, and he was a member of the North Dakota Stockman's board for four years. He has also been one of the advisors to the North Dakota Junior Simmental Association.

People who know the Hoiby's know how friendly and upbeat they are. Lyndon can brighten up any room he enters and always enjoys visiting with everyone. His self-deprecating and witty humor will bring a chuckle to anyone who talks to him.

There is no question why the Hoiby's were awarded the North Dakota Simmental Association Promoter of the Year Award in December at the annual meeting and banquet. They are promoting Simmental everywhere they go.

# Looking for Performance?

## Ellingson Simmental Performance Bull & Female Sale

Saturday,  
Feb. 17, 2007

Rugby Livestock, Rugby, ND  
1:00 PM CST

*A sample of the bulls for sale on Feb. 17th:*

#	Sire x MGS	BW	Color	205 Wt.	12-11 Wt.	ADG	CE	BW	WW	YW	MCE
601	Daytona x Preferred Stock	105	Blk Blz	920	1364	4.0	1.0	4.5	48.0	83.9	3.8
643	Powerline x Preferred Stock	102	Black	919	1305	3.6	2.6	3.8	52.1	93.8	5.4
645	Shocker x Americana	102	Red Blz	906	1330	4.2	-0.1	3.5	57.2	92.0	2.3
659	Nophalt x Preferred Beef	103	Black	889	1270	4.0	4.0	3.3	43.6	83.3	0.9
641	Shocker x Good-A-Nuff	105	Red	889	1293	3.9	2.6	3.6	53.1	82.2	1.3
672	Preferred Stock x BI Kansas	101	Blk Blz	883	1270	4.5	6.2	1.6	50.3	90.2	4.6
610	Traveler 004 x Long Cut	84	Black	879	1357	5.2	-0.6	4.0	40.2	85.2	
678	Shocker x Long Cut	97	Red spot	864	1180	4.2	-1.0	2.9	51.3	82.1	3.0
647	Dream On x Preferred Stock	94	Black	861	1273	4.2	9.2	1.6	43.9	78.2	2.4
650	Powerline x 600U	102	Black	847	1229	3.8	3.8	2.4	35.6	69.7	5.5
634	Fine Tune x Nophalt	90	Black	831	1227	4.4	5.2	1.7	43.1	77.0	1.0
639	Remington x BI Kansas	98	Black	820	1256	4.7	6.2	4.1	47.7	84.7	2.8
623	Freedom x Long Cut	104	Red	820	1309	5.2	2.5	3.4	45.7	81.3	1.4
671	Freedom x Bodybuilder	102	Red	820	1180	4.5	2.9	2.9	39.9	75.2	1.2
614	Freedom x Bodybuilder	75	Red	819	1278	4.7	2.9	1.4	38.6	74.3	1.2
604	Legacy x On Target	81	Black	812	1205	4.1	5.7	0.0	28.7	51.5	4.7

*Bulls will be ultrasound tested & guaranteed breeders*

Selling 55 Simmental & SimAngus Yearling Bulls,  
3 Two-Year-Old Bulls & 25 Open Heifers

**Ellingson Simmentals**

TERRY ELLINGSON & FAMILY  
701-384-6225

Contact us for a sale catalog or more information: 5065 125th Ave. NE • Dahlen, ND 58224  
tellings@polarcomm.com

GUEST CONSIGNORS: M&J Ranch, McCanna, ND: 701-397-5724  
McDonald Farm & Simmental, Inkster, ND: 701-248-3654

## Photo Contest

The North Dakota Simmental Association is sponsoring a photo contest this year. Pictures need to be colored, 8" x 10" and of Simmental cattle.



Awards will be given for three places in youth and adult divisions. Pictures need to be delivered to Farmers Livestock before 12:00 pm on Friday, December 15, 2006. Please include on a piece of paper your name, address, and which division, youth or adult, your picture should be entered into. All entered pictures will not be returned and will become the property of NDSA for future use in advertisements.



The winners will be announced at the annual banquet held on Friday, December 15, 2006. Those unable to attend can mail their photos to Greg & Kim Myers, 12066 57th Street SE, Kathryn, ND 58049. The photos mailed to Greg & Kim must be received prior to December 13, 2006.

To view 2006 entries and winners go to...  
[www.northdakotasimmental.com](http://www.northdakotasimmental.com)

LARSON  
**XL**  
 Simmental

## 29th Annual Production Sale

Tuesday, February 27th  
 1:30 pm CST  
 Kist Livestock, Mandan ND

46 Thick beef bulls  
 7 Red bulls  
 13 Simmental/Angus % bulls  
 10 Bred Heifers



**XL 6B** CNS Dream On \* Arapahoe  
 EPDs: 8.7 0.9 43 67 1.5 4 25 Wt: 11-20-06  
 975 lbs

View Bulls online at:

[www.xlsimmental.com](http://www.xlsimmental.com)



**XL 609** Preferred Beef \* HSF Nasdaq Wt: 11-20-06  
 EPDs: 7.6 1.85 34 61 2.85 9 26 995 lbs

Feeding arrangements available. Deduct \$50 if you haul your bull home sale day. Free delivery in Dakotas, 5% discount on 3 or more bulls. 37 years performance testing Simmental. Ultrasound Tested. Satisfaction Guaranteed.

Bill Larson  
 2406 8th Ave NE  
 Lemmon, SD 57638  
 701-376-5360

## James Creek SIMMENTAL

Your northern source for Fleckvieh genetics

Private Treaty sale begins February 6, 2007!

- Full Fleckvieh and Fleckvieh sired bulls
- High quality, yearling and two year old bulls for sale
- AI sired bulls by: Richmond Regis, Sir Arnold 4011, BHR 666
- Excellent bulls by: MFI Monico, JCS Commander our Junior Fleckvieh herdsire
- Growth, Maternal, Calving Ease, and Polled are included in the bull offering

## Heathe & Holly Widicker

4664 Main St. • Heaton, ND 58418  
 701-984-COWS (2697) • [jscow@daktel.com](mailto:jscow@daktel.com)  
[www.jamescreeksimmental.com](http://www.jamescreeksimmental.com)

Check out all of the bulls on our website. Performance data will be available after January 15. For more information on the bulls call or stop by. Feeding & delivery arrangements are available.

*A big thank you to all our Simmental friends for your prayers, phone calls, cards and memorials in the loss of our Dad and Grandfather, Myron.*

*We appreciated all the help that was given in our absence at the ND Showcase Sale. Words can't express how much it was truly appreciated.*

*Joe and Patty Bata • Chris and Penny Bata • Mark and Joey • Marlin*

**Tuesday,  
FEB. 6, 2007  
1:00 pm CT**

**NEW LOCATION:  
Rugby Livestock, Rugby, ND**

*Hoiby-Hystad*  
**Bullnanza**

*Selling 50 Bulls & 15 Bred Heifers*

You won't see Hoss or Little Joe at this Bullnanza, but you will see 65 high-performance red and black Simmental bulls and bred females bred with commercial cattle producers in mind.

*Don't miss this opportunity to pick from the top of two of the state's most progressive herds!*



**614**

**Dream On x Big Berth (Big Country)**  
BW: 92 (ET) • WW: 834  
EPDs: 9 1 48 80 2 3 27



**650**

**Rezult x Fortune 500**  
BW: 90 • WW: 754  
EPDs: 4 0 31 56 6 9 25



**658**

**Hummer x Network**  
BW: 102 • WW: 768  
EPDs: 7 2 36 68 5 5 23

**Herdsires represented:** Dream On, Rezult, GFI Magnum, HC Hummer, Red Rock, NLC Fortune, Red Coat & Other Top Simmental Sires!

*For more information, contact us:*

**Hoiby Simmental  
Ranch**

Lyndon Hoiby  
7980 101st Ave. NW  
McGregor, ND 58755  
701/546-4043

**J Bar H  
Simmental**

Jim Hystad  
1920 47th St. N  
Velva, ND 58790-9104  
701/624-5283



**651**

**GFI Magnum x BTS Black Out**  
BW: 97 • WW: 752  
EPDs: 1 1 27 47 4 7 21

# Vision IX

## SimAngus Production Sale

*Featuring 120 Exceptional Lots!  
65 Bulls & 55 Females*



GFI Rambler x M50 PB Angus-Bred



GFI Rambler x Meyer's Red Handed -WW 830



Preferred Beef x 8056 PB Angus -WW 780



Ellingson Legacy x NoPhalt -WW 855



Dream On x Redcoat -WW 825



BBS Phaltline x Big Sky -WW 860



LRS Paramount x Black Joker -Fall Bull



Rezult x Big Sky -Fall Bull



Freedom x Trendsetter -WW 870

**February 11, 2007  
1:00 PM, At the Farm**

Rydeen Farms  
Clearbrook, MN  
(218)776-3338, (218)280-1916  
rydeen@gvtel.com  
Ruffy Brook Simmentals

**For online catalog visit:  
[www.simmgene.com](http://www.simmgene.com)  
[www.breedingcattlepage.com](http://www.breedingcattlepage.com)**

**All sale cattle will be TB tested.**



# NORTHERN PLAINS SIMMENTAL

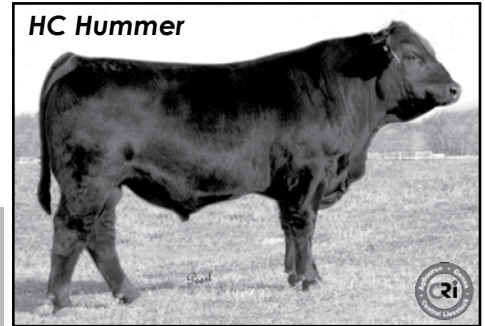
1st Annual Bull Sale • February 18, 2007 • At the Ranch northeast of Bowbells

## SELLING 20 BLACK AND RED BULLS

All sires include: Hummer, Powerline, On Target, Nophalt, & Magnum

### Sample of Bulls

NPS S151	NPS S265	NPS S25
Sire: Powerline	Sire: On Target	Sire: Hummer
EPDs: 4, 4, 39, 71, 5, 10, 29	EPDs: 3, 3, 34, 61, 3, 1, 18	EPDs: 7, 1, 36, 73, 0, 1, 16
BW: 91 WW: 810	BW: 92 WW: 765	BW: 87 WW: 775



4 bred and 4 open heifers consigned to the NW Select Sale will be on display. NW Select Sale date is March 10, 2007 in Stanley, ND.



For more information or to request a catalog call:  
JR and Miranda Aufforth • Bowbells, ND • (701) 377-2870

# Thank You!!

Thank you to Austin Vachel, Pearl Valley Simmentals, Ross, ND for his \$10,300 purchase of BTS Elegant Dream S627 at the 2006 North Dakota Simmental Classic Sale in Bismarck, ND. Watch for her development in his young program! Also, thanks to contending bidder Brian Hanson, Triple H Simmentals, Hannaford, ND.

We would also like to thank Gary Greniger, Sugar Brook Farm, MN, for their \$3200 purchase of BTS Ms Alliance S616. Your confidence in our program is appreciated.

**BLACK TIE**   
**SIMMENTALS**

*"Producing Quality Simmental Stock"*

Patrick Thorson  
16644 51<sup>st</sup> Street SE  
Kindred, ND 58051  
701-371-8230

Tim & Tam Clark  
1999B 18th St NW  
Turtle Lake, ND 58575  
701-799-7752

Mark your Calendars!  
*Dakota Power  
Bull Sale*  
February 12, 2007  
Valley City, ND



# North Dakota Simmental Association Classic Sale Results

December 16, 2006 - Bismarck, ND

1 Flush: \$4,000  
3 Embryo Lots: \$2,016  
31 Breds: \$2,965  
29 Opens: \$2,265  
64 Lots \$167,650 Gross  
\$2,620 Average

## Volume Buyers:

Mike Stavick, Veblen, SD  
Erika Kenner, Bozeman, MT  
Kenner Simmental, Leeds, ND  
Seven G Ranch, South Heart, ND

## High Selling Breds

Lot 30 R507 \$5,200

Consignor: Traxinger Simmentals  
Buyer: Ulmer Cattle Co., Oaks, ND

Lot 7 STR 3108 MS PBEEF R502 \$4,300

Consignor: Strommen Simmentals  
Buyer: Clearwater Simmental, Milan, IN

Lot 10 THSR Rosanna R522 \$4,100

Consignor: Triple H Simmentals  
Buyer: Kenner Simmental, Leeds, ND

Lot 20 PSR Crackin Good I84R \$4,000

Consignor: Pherson Simmentals  
Buyer: Erika Kenner, Bozeman, MT

## High Selling Opens

Lot 53 BTS Elegant Dream S627 \$10,300

Consignor: Black Tie Simmentals  
Buyer: Austin Vachel of Pearl Valley Simmental, Ross, ND

Lot 61A BCLR Miss Shayler S615 \$4,200

Consignor: Bichler Simmental  
Buyer: Pearl Valley Simmental, Ross, ND

Lot 50 KS Miss Opal S246 \$4,000

Consignor: Kenner Simmental  
Buyer: Mike Traxinger, Claremont, SD

## High Selling Embryos

Lot 2B Kayla/Traveler 004 \$450 each

Consignor: Kenner Simmental  
Buyer: Western Cattle Source

Lot 2A Kayla/Lucky Man \$400 each

Consignor: Kenner Simmental  
Buyer: Raisin Cain Cattle Co, IN

Sale Managed by: North Dakota Simmental

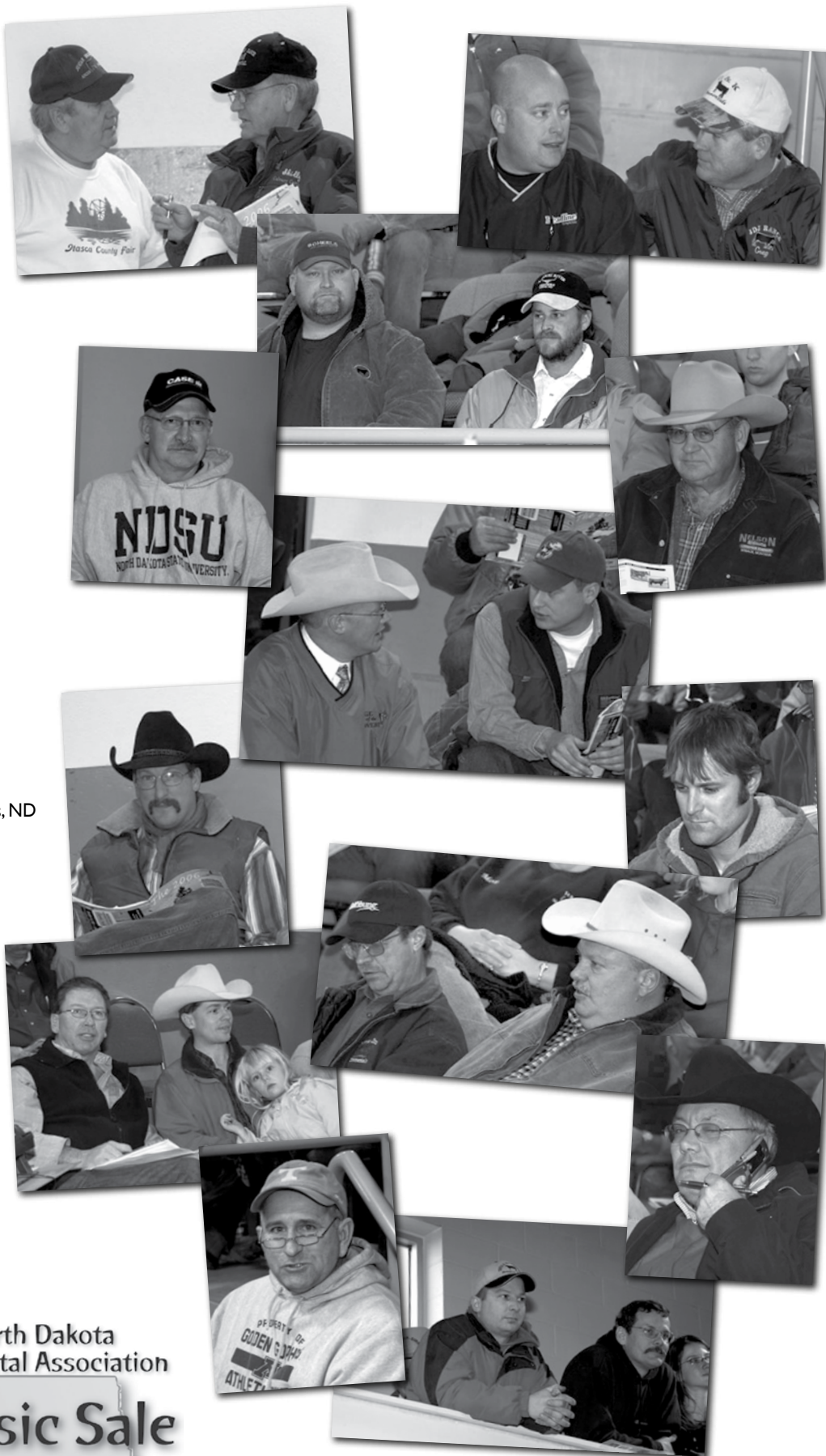
Auctioneer: Tracy Harl

Sale Consultant:



Doug Parke  
153 Bourbon Hills  
Paris, KY 40361  
PLEENT@aol.com

North Dakota  
Simmental Association  
**Classic Sale**  
December 16th, 2006  
Bismarck, North Dakota



Thanks for attending!

# Johnson & Bichler Simmentals

2nd Annual Bichler/Johnson "Quality, Not Quantity" Bull Sale

February 15, 2007 at Linton Livestock in Linton, ND. Sale time is 1:00 PM.

35 yearling Red and Black Simmental and SimAngus bulls sell



**S15**

**Dream On X Power Drive**

EPDs: 11, -.2, 32, 57, 5, 1, 17

Several stylish, solid black bulls in the offering.



**S264**

**Extra Effort X Fortune 500**

EPDs: 8, .4, 23, 44, 3, 8, 19

4 Extra Effort sons sell.



**S26**

**TNT Gunner X BBS Redcoat**

EPDs: 8, -.6, 26, 49, 3, 8, 20

4 powerful gunner sons sell.



**S510L**

**Perfector X Joker**

EPDs: 6, 3, 40, 74, 0, 7, 27

He is the high performing bull of the offering. A true herdsire prospect!



**S99-2**

**Traveler 004 X Red Power (Tizzy)**

EPDs are -, 2, 36, 73, -, 8, 26

5 1/2 bloods sell including 2 004 sons out of a Tizzy daughter.



**JSF Rosa**



**BCLR Miss Shaylee S515**

Look for flush mates and maternal brothers to these high selling heifers in the 2007 Bichler/Johnson Bull Sale!

On behalf of Bichler/Johnson Simmentals, we would like to thank all the bidders and buyers for their support at the 2006 ND State Simmental Showcase Classic. A special thanks to the following breeders who added Bichler/Johnson influence to their programs; Pearl Valley Simmentals, Kenner Simmentals, Finke Simmentals, C Diamond Inc. and the Nicholson Family, Darrell Kemnitz, and Stavik Simmentals.

[www.johnson-bichlersimmentals.com](http://www.johnson-bichlersimmentals.com)

*Bichler Simmentals*

Doug Bichler  
130 83rd St SE  
Linton, ND 58552  
701-254-4306  
doug\_bichler@hotmail.com

*Johnson Simmental Farm*

Jeff Johnson  
57570 Hwy 28  
Alberta, MN 56207  
701-371-4141  
jeff.johnson@hubbardfeeds.com

# Bata Brothers/Olafson Brothers

## Joint Simmental Bull and Female Sale

March 7, 2007 • 1:00 PM CST

### Selling

Sale location: Rugby Livestock Auction, Hwy. 2 West, Rugby, North Dakota

75 Bulls — Registered Purebreds, 3/4 Bloods and SimAngus • Reds and Blacks • Solids and Baldies

45 Registered Bred Heifers — Purebreds, 3/4 bloods & SimAngus • Sired by and bred to the nation's leading sires

5 Open Heifers

Visit our website at: [www.bataolafson.com](http://www.bataolafson.com)



**OLF S531**

Dream On x 600U

EPDs: 11 2 46 80 2 6 29

This Dream On son is out of a high performing 600U dam with ratios of 108 for weaning and 105 for yearling. Check out his high growth EPDs!



**OLF S501**

Nichols Legacy x TNT Trooper M256

EPDs: 8 2 36 66 5 4 23

Stylish and thick with extra, extra length. This Legacy son has excellent EPDs and high growth from his maternal grandsire, TNT Trooper.



**OLF S491**

Dream On x Black Irish Kansas

EPDs: 11 0 35 63 4 4 22

Tremendous natural thickness, eye appeal and depth of rib. He is as thick a calf as we have ever raised. Dream On will live on through this exciting new herdsire prospect.



**OLF S681**

BF N324 Triathlon x Black Irish Kansas

EPDs: 8 3 40 77 6 6 26

Sired by Triathlon, our new senior herdsire who is doing a tremendous job of siring performance and style. Several Triathlon sons will be at the front end of the sale order.



**BBS S39**

RFS Maximum x BBS Zima D55

EPDs: 2 4 61 94 0 -2 29

Our top weaning weight bull, he is as thick and deep as you can make them.



**BBS S70**

BBS Redeye P35 x MV Red Light

EPDs: 3 2 40 64 1 2 22

Redeye had a 19.7" REA as a yearling and indications are his offspring won't disappoint us.



**BBS S71**

TNT Top Cut x TNT Black Boss F131

EPDs: 4 4 49 87 6 6 31

Our Top Cut sons averaged 838 lbs at weaning with 88 lbs birth weight. A true performance black Simmental bull. Order your semen today!



**BBS S30**

BOZ Redcoat x Meyers Red Line

EPDs: 5 3 49 80 6 0 24

Three outstanding sons of Redcoat sell, including a son of the great J109.



**OLF Miss Legacy R238**

Nichols Legacy x Ellingson Black Perfector

EPDs: 7 2 36 64 4 6 23

Our entry to the NDSA Classic Sale. More females like her will sell on March 7th!

**SALE DAY PHONE:  
701-776-6393**

Many bulls are being tested for Homozygous Polled  
View our catalog online at: [www.simmgene.com](http://www.simmgene.com), after February 15.

### Sires represented in the bull pen:

CNS Dream On	BBS Redeye P35
PPSR Nophalt	Meyers Redline
BOZ Redcoat	BBS Redneck M25
TNT Top Cut	RFS Maximum
BF N324 Triathlon	THS Freedom
Nichols Legacy	



**BATA BROS.**  
SIMMENTAL CATTLE  
6322 Highway 35  
Adams, North Dakota 58210  
Joe — 701-944-2732  
jpbata@polarcomm.com



**Curtis Olafson**  
13043 84th St. NE  
Edinburg, ND 58227  
701-993-8240 or 8450  
colafson@polarcomm.com  
[www.bataolafson.com](http://www.bataolafson.com)

Performance  
Predictability  
Personal Service

# BREEDING FOR THE FUTURE

## WILKINSON FARMS SIMMENTALS

### Annual Production Sale

Wednesday, February 14, 2007, 1:00 pm CST  
Napoleon Livestock, Napoleon, ND  
Sale Day Phone: 1-800-932-8821  
Selling: 50 Powerful Polled Bulls  
(5 Percentage Bulls)  
15 Open Heifers (out of first calf heifers)



**WS Expressway S34**  
Hart's Four Lane x Kappes Rock Solid  
BW: 105 • WW: 832  
EPDs: 2 3 48 83 5 8 32  
Outcross black herd sire prospect. Dam had 110 REA Index and 125 IMF Index.



**WS Powerpack S12**  
Powerline x Nophalt  
BW: 83 • WW: 813  
EPDs: 2 1 40 77 5 8 28  
Exciting heavy-muscled powerhouse with a 113 BW Index and 110 WW Index.



**CDI 175S**  
Pelton's Manfred x Hook's Shear Force  
BW: 96 • WW: 862  
EPDs: 10 1 39 67 5 12 32  
Exclusive black Manfred x Shear Force mating with depth and muscle along with balanced EPDs and good growth. WW Index 111. BW Index 105.



**WS Red Force S41**  
Hook's Shear Force x EC45 X's Red  
BW: 105 • WW: 756 [107 Index]  
EPDs: 10 2 43 68 2 10 31  
Solid red outcross that ranks in the top 20% or higher in: CE, WW, MM, MWW, YG, MB and REA.



**CDI 121S**  
TNT Gunner x ER Black Cisco  
BW: 103 • WW: 858  
EPDs: 9 2 39 67 2 4 24  
Stylish red Gunner son with excellent muscle expression, sound structure and a unique pedigree. WW Index 110.



**WS Sir Loin S15**  
R Plus Red Ribeye x Branded Beef  
BW: 94 • WW: 735  
EPDs: 4 1 39 71 5 11 30  
Solid red non-diluter with a different pedigree. Dam is black with a 121 REA Index. He shows it!



**WS Prime Rib R69**  
SRS Preferred Beef x Nichol's Legacy  
BW: 95 • WW: 750  
EPDs: 6 3 36 63 5 9 27  
Fall-born bull with tremendous length, quarter, and top. Dam is as beautiful a cow as you'll find.



**CDI 112S**  
PPSR Nophalt x Hook's Shear Force  
BW: 88 • WW: 906  
EPDs: 8 0 30 64 1 11 26  
Heterozygous black standout that was #1 for Adj. WW. Dam is hard-working 2nd calf heifer. WW Index 116. BW Index 110.



**WS Sacajawea S106**  
Hook's Shear Force x NLC Keystone  
BW: 78 • WW: 632  
EPDs: 11 -1 30 56 1 13 27  
Solid red beauty with black parents. Selling all my first calf Heifer's daughters.

### Wilkinson Farms Simmentals



Terry & Cathy Schlenker Family  
7649 49th St. SE  
Montpelier, ND 58472  
701-489-3583  
email: eatbeef@daktel.com

We request no Friday night or Saturday calls, please. • Visitors welcome!

### Guest Consignor:



#### C Diamond Simmentals

Neil Nicholson Family  
4720 34th Ave. SE  
Dawson, ND 58425-9630  
Home: 701-327-4438  
Cell: 701-391-6205  
www.cdiamondranch.com

# Begger's Diamond V Ranch

## Big Sky Genetic Source Bull Sale

# Wednesday, February 7, 2007

At the Ranch, Wibaux, MT • 12:30 p.m.

Directions: 4.5 miles south, 1.5 miles east, 2.75 miles south of Wibaux.

### Simmentals



#### Dream On x BDV Mr Hustle

The BLACK Simmental bulls we produce are loaded with capacity and fleshing ability.

We were one of the first ranches in the nation to breed Black Simmentals and know what it takes to keep them black. Our bulls won't have white feet and tails. They won't throw spots and they will sire solid colored calves. Many of these bulls are homozygous black and polled.

Our cattle are culled hard for structure, disposition and eye appeal.

They calve easy and are bred to be maternal, have performance, feedlot efficiency and carcass value.

These bulls will add value to your Angus cattle. All the data leads toward a crossbred animal in the pasture, in the feedlot and on the rail. With the cost of production, an extra \$50 to \$100 a head will sure make a difference.

NOTE: The 50 fall-born bulls were all born on the range. They were raised on the range, weaned and then turned back out. No extra feed was fed until November. They are still on the range and will be developed that way. They are big, stout, and rugged. They are ready for heavy use.

### Dark Red Non-diluted Simmentals



#### Reloaded x Charlie Brown

We will offer 20 Dark Red Non-diluted Simmental bulls. They are deep ribbed, thick made and powerful. You will find these bulls to have an outcross pedigree to most red bulls. Yes they have what it takes to become major contributors to the breed. Four of these bulls are Red Angus x Simmental OPTIMIZERS. Come take a look at these red bulls. They are a powerful group.

### Angus



#### Traveler 004 x Sitz Alliance 6595

When it comes to big stout easy fleshing Angus cattle with volume and eye appeal you need to take a serious look here. The Angus bulls at Begger's Diamond V Ranch are elite in every trait. We do not single trait select. These bulls are elite pedigreed and have calving ease, performance and carcass traits that excel.

### Halfblood



#### Preferred Stock x Leachman Distinction

This 1/2 Angus 1/2 Simmental fall born bull represents the type of cattle we are producing in volume at Begger's Diamond V Ranch. We call our 1/2 and 3/4 Simmental x Angus OPTIMIZERS as they will produce OPTIMUM performance, OPTIMUM eye appeal and OPTIMIZE profits. If you have the need to add more value to your calf crop try an OPTIMIZER.

More pictures and catalog online at [www.breedingcattlepage.com](http://www.breedingcattlepage.com)

***These bulls will add pay weight to your calf crop, maternal strength to your cow herd and dollars to your bottom line.***

## Selling 160 Ranch Raised Bulls

135 Simmental  
25 Angus

- 50 of these bulls are 18-month-old fall born
- 80 are Black Purebred Simmentals
- 20 are Dark Red Non-diluted Red Simmentals
- 40 are SimAngus OPTIMIZERS
- 25 are Top Notch Angus
- 5 Red Angus Sure Shot heifer bulls

*All offer elite genetics and opportunity.*

**Buy Now  
Take Possession Later**

WE OFFER FREE ...

- Feed until April
- Semen Test and Vet Check before Delivery
- Delivery to central point in Montana and neighboring states

ALL Bulls will be ultra sounded for carcass traits.  
ALL Bulls are guaranteed to be breeders.  
ALL Bulls are Performance Tested with both weights and EPDs.



108R

LRS Paramount x Westpoint Traveler 6807  
SimAngus Optimizer  
Homozygous Black and Polled



**100R**

Rito 6I6 x NLC Polled Coal  
SimAngus Optimizer  
Homozygous Black and Polled



**106R**

Preferred Stock x CH Quantum  
SimAngus Optimizer  
Homozygous Black and Polled



**68S**

Extra Credit x Oscar 711  
SimAngus Optimizer  
Homozygous Black and Polled



**608S**

Boyd New Day x VRD  
Purebred Angus



**105R**

Hart Excel x Black Extender  
Purebred Simmental



**25S**

ES Dakota x Power Surge  
Purebred Simmental  
Homozygous Black and Polled



**76R**

Reloaded x LM Plenty Coups  
SimAngus Optimizer  
Non-diluter Red



**39S**

Remington Red Label x Extra Effort  
Purebred Simmental  
Non-diluter Red



**22S**

Brooks Above Par x Preferred Stock  
Purebred Simmental



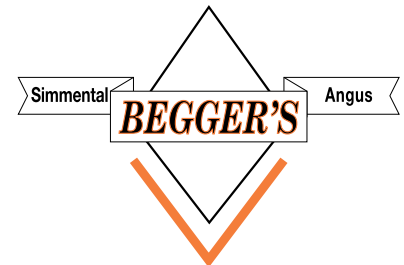
**602S**

Boyd New Day x High Tech  
Purebred Angus



**9S**

Preferred Stock x Fame  
SimAngus Optimizer  
Homozygous Black and Polled



HC 71 Box 7125  
Wibaux, MT 59353  
Bill Begger (406) 795-8148  
Jerry Begger (406) 795-2326  
Bob Begger (406) 795-2380  
Email: darbegger@yahoo.com

More pictures and catalog online at [www.breedingcattlepage.com](http://www.breedingcattlepage.com)



# KELLER'S BROKEN HEART RANCH



*"Simmental Beef on the Cutting Edge!"*

**TUESDAY, FEBRUARY 20, 2007 • 1:00 PM CST**

**Kist Livestock • Mandan, ND**

*Selling:*

**75 Red & Black Yearling Simmental Bulls**

**80 Yearling Heifers**



**KBHR S003**

Sire: SRS Network • **WW: 773 lbs.**  
EPDs: CE 7.3 BW 3.4 WW 47.4 YW 82.1 MCE 4.8  
MM 7.2 MWW 30.9



**KBHR S124**

Sire: Lazy S Red Shocker • **WW: 733 lbs.**  
EPDs: BW 2.3 WW 44.0 YW 71.9  
MM 3.8 MWW 25.8



**KBHR S136**

Sire: SRS Network • **WW: 700 lbs.**  
EPDs: CE 7.6 BW 1.2 WW 33.9 YW 65.3 MCE 2.8  
MM 11.8 MWW 28.8



**KBHR S046**

Sire: SRS Network • **WW: 780 lbs.**  
EPDs: CE 7.3 BW 2.9 WW 50.6 YW 86.9 MCE 4.8  
MM 5.8 MWW 31.3



**KBHR S004**

Sire: PPSR Nophalt • **WW: 696 lbs.**  
EPDs: CE 4.5 BW 3.3 WW 43.5 YW 83.3 MCE 2.6  
MM 5.7 MWW 27.4



**KBHR S173**

Sire: DSR Real Red • **WW: 680 lbs.**  
EPDs: CE 7.1 BW 4.0 WW 34.8 YW 63.2 MCE 2.0  
MM 1.3 MWW 18.7



1211 Neko

Congratulations to Shelby Hennessy for showing the Grand Champion Simmental Female at the 2006 North Dakota State Fair. The female was purchased in our 2006 sale.



**KBHR S037**

Sire: Lazy S Red Shocker • **WW: 672 lbs.**  
More heifers like her will sell!



**KBHR S079**

Sire: THSR Night Shift • **WW: 688 lbs.**  
EPDs: CE 5.0 BW 2.1 WW 36.5 YW 66.3 MCE 3.7  
MM 8.7 MWW 27.0

*Catalogs available upon request, call or write:*



**KELLER BROKEN HEART RANCH**

Dwight, Susan, Luke, Jake & Tess Keller  
Eugene & Helen Keller  
1573 County Rd 136 • Mandan, ND 58554  
Email: kbhr@westriv.com

**701-445-7350**  
**Cell: 701-471-5215**



# TNT

# SIMMENTALS

22<sup>nd</sup> Annual "Genetic Explosion" Sale

The MOST POWERFUL set of bulls ever! They are THICK and DEEP. Many HOMOZYGOUS POLLED and the best selection of BREED LEADING HERD SIRES ever! All backed by the TNT 100% GUARANTEE!

**SELLING 130 BULLS**

**Purebred, 3/4, & 1/2 Red Simmental**  
**Purebred, 3/4, & 1/2 Black Simmental**  
**Purebred 1A Red Angus**

**Friday**  
**FEB. 9, 2007**

1:00 pm CST

At the Ranch, Almont, ND



**S297 -Purebred**

Montana Black x RW Bomber  
BD: 03/08/06 AWW: 823



**S226 -Homo Polled 4 Full Brothers Sell**

TNT Gunner x SRS Fran (Five Star's Dam)  
BD: 02/22/06 AWW: 835



**S293 -Purebred**

TNT Gunner x Lchm Body Builder  
BD: 03/08/06 AWW: 895



**S318 -Purebred**

STF Starquest x TNT Black American (TNT Bruzer's Dam)  
BD: 03/14/06 AWW: 795



**S224 -Halfblood**

Dateline 7270 x Mr MT  
BD: 02/22/06 AWW: 844



**S375 - Homozygous Polled**

TNT Five Star x New Demension (Gunner's Dam)  
BD: 02/27/06 AWW: 864



**S312 - Homozygous Polled**

TNT Five Star x New Demension (Gunner's Dam)  
BD: 03/13/06 AWW: 874



**S319 -Purebred**

Harts Extra Effort x TNT Cruzler  
BD: 03/14/06 AWW: 825



**S290 -Homo Black & Polled**

TNT Hemi x Nichols Legacy  
BD: 03/07/06 AWW: 830



**S228 -3/4-blood, Twin Also Sells**

TNT Horizon x TNT Twister  
BD: 02/23/06 AWW: 752



**S257 -Homozygous Black**

TNT Hemi x TNT Aftershock (Full Sister to Twister)  
BD: 03/01/06 AWW: 854

- \* Pay half sale day!
- \* Volume discounts!
- \* Feeding & delivery available!
- \* Ultrasound and performance data, along with current EPD's will be available!

*Just 15 miles south of I-94 Exit 123.*  
*Visitors always welcome!*

For catalog or video, contact:  
**TNT SIMMENTAL RANCH**

Kevin & Lynette Thompson  
5125 53<sup>rd</sup> St., Almont, ND 58520-9731  
Phone (701) 843-8454 Fax (701) 843-7043  
email: kevinandlynette@westriv.com  
web: www.tntsimmentals.com  
DVAuction: www.dvauction.com

# Haas Ranch Simmental Bull Sale

Monday, February 5, 2007 • 2:30pm CST  
Kist Livestock Auction • Mandan, ND • 701-663-9573



S64  
Above Par x Desperado  
EPDs: 9 • 2 • 38 • 60 • 2 • 2 • 21  
Adj. WW: 785 lbs



S52  
Remington x Arapahoe  
EPDs: 7 • 4 • 45 • 72 • 2 • 8 • 30  
Adj. WW: 826 lbs



S92  
Freedom x Herc's Elite  
EPDs: 6 • 6 • 50 • 93 • 1 • 9 • 34  
Adj. WW: 778 lbs



S18  
Pay Day x 600U  
EPDs: 6 • 2 • 42 • 80 • 2 • 6 • 27  
Adj. WW: 850 lbs



S80  
Ivy League x Aftershock  
EPDs: 6 • 2 • 36 • 64 • 0 • 4 • 22  
Adj. WW: 958 lbs



S97  
Northland x Redcoat  
EPDs: 6 • 2 • 47 • 78 • 4 • 7 • 30  
Adj. WW: 893

50 Outstanding Performance Bulls  
Half Blacks • Half Reds • Many Non-Diluted Reds

## Haas Ranch

Larry & Tom Haas • Elgin, ND 58533 • 701-584-2244

From Elgin: 8 miles south, 2 miles east, 1/2 mile south & 1/2 mile east

# Byproducts 101: Understanding How Four Common Byproducts Are Produced and Why It Impacts Nutritional Value

Printed with permission from Dr. Greg Lardy, NDSU Beef Cattle Extension Specialist

Byproducts (or as some like to call them, co-products) are becoming increasingly available in this region. In particular, things like dried distillers grains, corn gluten feed, soybean hulls, and wheat middlings are available in large quantities in North Dakota. The current dilemma faced by many producers is that much of the volume produced by these plants has been contracted out this fall when corn prices increased and feed became more expensive. However, there are still some quantities of these byproducts available from certain plants.

This column will help you gain a better understanding of how each of these byproducts is produced and, as a result, what the nutritive value of each byproduct is and some of its limitations. After you read this, you should be better equipped to make informed decisions about which of these might have a place on your ranch.

## General Comments About Grain and Oilseed Processing

In general, most grain or oilseed processing is intended to extract either starch or oil from a grain or oilseed. For example, with soybean processing, the goal is to extract the oil that is used in the human food market. In ethanol production, the goal is to turn corn starch into fuel grade alcohol (ethanol). Knowing what the processor wants to extract is the first step in understanding what the resulting byproduct should consist of from a nutrition standpoint. In most cases, processors are extracting starch or oil and the remaining materials (generally fiber, protein, and minerals) are usually more concentrated in the remaining byproduct than they are in the original grain or oilseed.

The other thing to keep in mind is that each company's process will vary slightly from plant to plant. In addition, many other factors, such as grain source, processing methods, plant age, and production technologies impact the resulting nutritive value of the byproducts produced. Remember that some companies place importance on managing byproducts to ensure less variation and improved product quality, while others may simply see byproduct production as an opportunity to get rid of materials that are not their primary business commodity. There is nothing inherently good or bad about either strategy. However, it is important to understand the company's philosophy so you know what to expect.

## Dried Distillers Grain

Distillers grains are byproducts of the dry milling industry. As the name implies, corn is dry milled or hammer milled prior to the addition of water. The proper name for this byproduct in the AAFCO (American Association of Feed Control Officials) handbook is corn distillers dried grains plus solubles, but in most cases, it is simply referred to as dried distillers grains or distillers grains. In this area of the county, corn is by far the most common feedstock used in ethanol production. It is important to note that plants that use wheat, barley, or other cereal grains will produce different byproducts.

In the ethanol production process, corn is ground, mixed with yeast and enzymes, and the resulting fermentation process produces ethanol from the corn starch. The mixture is distilled to remove the ethanol. The remaining mixture is centrifuged to separate the mash from the solubles. Some of the moisture in the remaining liquid byproduct is removed by heating to create condensed distillers solubles. This is added back to the mash to make distillers grains plus solubles. This product can be marketed as a wet byproduct (wet distillers grain plus solubles; generally referred to as wet distillers grains) or it can be dried to produce dried distillers grains plus solubles. This byproduct contains corn proteins, corn oil, spent yeast cells, fermentation byproducts, and some soluble proteins that result from the fermentation process. Dried distillers grains is difficult to pellet due to the fat content. High levels of phosphorus and sulfur can be found in dried distillers grains.

## Corn Gluten Feed

Corn gluten feed is a byproduct of the wet milling industry. In the wet milling industry, corn is steeped in water and sulfuric acid prior to the milling procedure.

The steeping process helps ready the corn kernel for milling to separate it into components such as corn starch, corn germ, gluten, and bran. The corn starch is then used to make corn sweetener (high fructose corn syrup). The corn germ is usually processed further to remove the corn oil, while corn gluten meal (a high protein feed) is separated for sale into the poultry and pet food markets. The corn bran is combined with corn steep liquor (the liquid byproduct from the steeping process) to make corn gluten feed. Corn gluten feed contains soluble proteins and corn fiber or bran. The bran is a highly digestible fiber for ruminant animals. Dry corn gluten feed can be pelleted.

The addition of sulfuric acid during the steeping process increases the sulfur content of the resulting corn gluten feed. This, in combination with high sulfate water, can result in problems with polioencephalomalacia (PEM or polio).

## Wheat Middlings

Wheat middlings (wheat midds) are the byproduct of flour or semolina production from either wheat (in this area generally spring wheat) or durum. The millers are interested in removing the flour or starch from the wheat kernel. The resulting byproduct consists of the wheat bran, wheat germ, and small amounts of starch. Small amounts of water are added in the milling process to improve efficiency (usually less than 5% by weight), but this added water necessitates the use of aeration fans or flat storage in order to prevent mold development or spoilage.

Wheat midds are a very popular feedstuff because they are highly palatable, improve pelleting quality in commercial feeds, and are very versatile. The can be used in many different commercial feed formulations. Most wheat midds are pelleted. Bulk (non-pelleted) midds are very bulky, making them difficult to handle in conventional grain handling systems. I recommend purchasing them pelleted to ease transportation and handling concerns. Pellet sizes in North Dakota mills generally range from 1/4 to 1/2 inches.

## Soybean Hulls

Soybean hulls are a byproduct of the soybean processing industry. Soybeans are passed through a roller mill to crack the beans and begin the hull removal process. The meats and hulls are screened to separate the hull from the meat. The meat portion undergoes hexane oil extraction while the hull is generally pelleted prior to sale. Soybean hulls are another source of highly digestible fiber and contain approximately 12 percent CP.

Table 1 shows the nutritional characteristics of the four byproducts mentioned in this article. For more detailed information, refer to the following bulletins:

General Byproduct Information:

<http://www.ext.nodak.edu/extpubs/ansci/beef/as1182.pdf>

Distillers Grains:

<http://www.ext.nodak.edu/extpubs/ansci/beef/as1242.pdf>

Corn Gluten Feed:

<http://www.oznet.ksu.edu/library/lvstk2/mf2488.pdf>

Wheat Middlings:

<http://www.ext.nodak.edu/extpubs/ansci/livestoc/as1175w.htm>

Soybean Hulls:

<http://www.oznet.ksu.edu/library/lvstk2/mf2438.pdf>

Prices and Suppliers:

<http://www.ag.ndsu.nodak.edu/aginfo/dairy/dairyext/coproduct.htm>

**Table 1. Nutrient composition of selected byproducts.**

Byproduct	%, DM Basis			
	CP <sup>a</sup>	TDN <sup>a</sup>	Calcium	Phosphorus
Dried Distillers Grain	29.5	86.0	0.10	0.40
Corn Gluten Feed	21.5	83.0	0.10	1.20
Wheat Middlings	19.1	83.0	0.16	1.01
Soybean Hulls	12.4	80.0	0.59	0.17

<sup>a</sup>CP = Crude Protein; TDN = Total Digestible Nutrients

# Spring Harvest

## Simmental Bull Sale

### Monday, January 29, 2007

1:00 PM CT • Farmers Livestock, Bismarck, ND



**STR 302 MR 33 S611**

BD: 1-20-06

ER K33B x Black Joker

EPDs: 5 -1 23 49 -1 14 26



**STR RZ5H Spencer S613**

BD: 1-21-06

ER K33B x ER Black Cisco 532C

EPDs: 7 1 28 50 1 9 23



**STR 808 Red Sampson S615**

BD: 1-23-06

ER K33B x WHF Red Rookie

EPDs: 3 -1 29 52 -1 9 24



**STR 812 Red Power S620**

BD: 2-1-06

ER K33B x BH Right Time

EPDs: 6 1 35 62 -1 10 28



**Tri E S623**

BD: 2-12-06

Hooks Red Quorum x Nichols Legacy

EPDs: 5 2 50 90 1 -3 22



**Tri E S632**

BD: 2-18-06

Hooks Red Quorum x Nichols Legacy

EPDs: 5 -2 24 51 1 4 16



**Tri E S604**

BD: 2-5-06

Dream On x Black Joker

EPDs: 8 0 38 66 1 6 25

*You can reap the  
benefits of our full-cycle  
industry experience:*

*Selling:*

**65 Bulls**

**15 Bred Heifers**

Offering by These Popular AI Sires:

Magnum, Hooks Shear Force, Red Quorum,  
Hooks Pacesetter, Dream On, RW Bomber,  
Lucky Dice and ER K33B

*For more information, or to be added to our mailing list,  
email [triesimentals@hotmail.com](mailto:triesimentals@hotmail.com) or contact us:*

**TRI E SIMMENTALS**

Clifford, ND

Mike & Patty Elliott: 701-488-2712

Kurt & Cheryl Elliott: 701-786-2712

Kevin & Stacy Elliott: 701-488-2243

Feedlot: 701-488-2241 • [triesimentals@hotmail.com](mailto:triesimentals@hotmail.com)

**STROMMEN  
SIMMENTALS**

**Strommen Simmentals**

The Bryan Strommen Family

Arthur, ND • 701-967-8320

# UPPIN' The ANTE

Bull & Female Sale

Friday, February 2, 2007 • 1 pm CST

Farmer's Livestock Exchange, Bismarck, ND

**Selling: 60 Simmental & SimAngus Yearling bulls  
40 Commercial Simmental Bred heifers (bred Angus)**

For sale catalog or more information contact:

## C/K Simmentals

Kelly & Cheyanne Erickson  
6219 39th St. NW  
Plaza, ND 58771  
(701) 497-3749  
(701) 898-1583  
simbeef@rtc.coop

## 4E Simmentals

Robert Erickson Family  
6317 42nd St. NW  
Plaza, ND 58771  
Bob Erickson (701) 497-3381  
Shane Erickson (701) 497-3558  
Kipten Erickson (701) 497-3382



SILVER TOWNE FARMS  
David Hendrickson, Owner  
Doug Smith, Manager  
4440 W. St. Road 32  
Winchester, Indiana 47394  
(765) 584-5894  
stfarms@globalsite.net



**684S** PB Simmental **2-06**  
HC Hummer 12M x NJC Love Me Don't U  
4.7 0.6 36 74 1.4 10 28



**SPI4** PB Simmental **1-06**  
STF Nicholas 637N x STF Desa Rae  
7.8 1.3 34 57 1.0 7 24



**S131** 1/2 SM x 1/2 Angus **2-06**  
STF Cool Jets MD44 x 131 PB Angus  
- -0.8 11 24 - 3 9



**S301** PB Simmental **4-06**  
STF Double Decker M076 x C/K Angel Eyes 301  
8.8 2.5 40 65 2.7 3 23



**S12** PB Simmental **2-06**  
LSS Thumper KG46 x 3D Miss 512J  
6.0 2.4 34 58 3.9 7 23



**S10** PB Simmental **2-06**  
LSS Thumper KG46 x 4E Miss K402  
6.0 3.1 41 72 3.5 9 29

# North Dakota Simmental Association Annual Banquet

## *Appreciation of Service to the ND Simmental Association* **Sue Erickson**

Twenty-five years ago the Bob and Sue Erickson family purchased their first purebred Simmental cattle. This was the start of their involvement with the North Dakota Simmental Association and friendships across the nation. As the family attended shows, it became natural for Sue to help and encourage the young people that were showing cattle. This evolved into her becoming a Youth Advisor for the Junior Simmental Association. She managed two successful ASA Regional Junior Classics. Sue also served on the original Northern Black Simmental Classic Sale board and remained on the sale committee through 2006.



In 1997, Sue became Editor of the new North Dakota Simmental Scene. With this, she became the unofficial representative of the NDSA. She attended shows, sales, cattle tours, Junior events and especially the State Fair. We know that she has made many friends through this association. The NDSA would like to thank her for all the years of dedicated service to the association.

## *Pioneer Award Winner* **Gary Skretteberg**

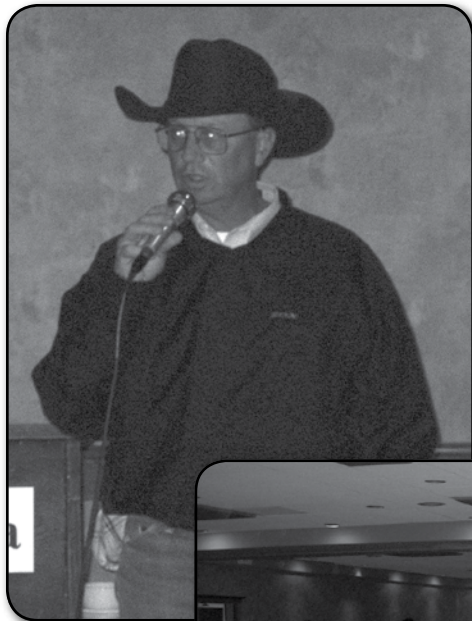
MGL Simmentals of Carson was started in 1972, consisting of Morville, Gary and Loren Skretteberg. The ranch name was later changed to 3M Simmentals, but the top quality genetics always remained the same. The ranch is located along the beautiful Heart River, which made for an ideal setting for cow-calf production. The Skretteberg ranch operated with great efficiency. Cows could often graze corn stalks and water out of the river up to a month before calving. When they were calved out, the mothers and calves were back out into small groups benefiting from the natural protection of the Heart River.



When the Skrettebergs joined forces with Meyer Simmentals and Moser Simmentals in the early 1970's to hold their production sale at Farmer's Livestock. The very first sale was held after a stock cow sale. The wives of the group sat in the seats hoping the crowd would stick around after the cows sold. Much to their surprise the stands filled up even more before the bull sale! Needless to say, those impressive Halfblood bulls sold well.

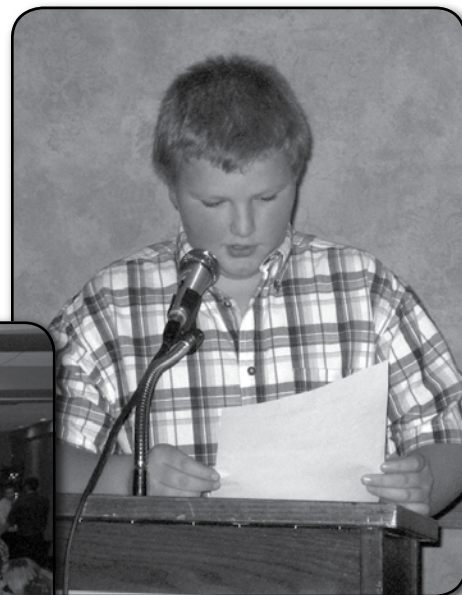
3M Simmental pedigrees show up in many herds around the nation. Many females out of this herd have gone on to become donors for their respective owners such as, MGL 325R, 3M 81B and 3M Molly.

Gary and Audrey Skretteberg's 3M Simmentals have made their mark not only on the North Dakota Simmental Association but the entire Simmental Breed. Congratulations Gary and Audrey.



*Sale Manager,  
Jeff Thomas,  
speaks at  
the banquet*

*Junior of the Year  
Justin Hanson*



*Part of the large crowd  
at the banquet.*

# North Dakota Simmental Association Annual Banquet

## *Promoter of the Year Award*

### **Lyndon Hoiby Family**

Anyone who has attended a show in the state in the past year has seen this man with his wife, two kids and a few head of cattle. Not only are they attending shows, but winning the State Point Shows in both the Simmental and the Commercial divisions — the two largest divisions of competition. Promoting Simmental is what they do everywhere they go.

Starting in the Simmental breed through 4-H in 1982, the herd has grown to 175 registered Simmental cows and 50 registered Simmental heifers. Lyndon markets his bulls at this own bull sale each year in February.

Without any hired help, the whole family pitches in to help with the farm work. Grain farming is also an important part of their lives, raising small grains, peas and lentils. Just recently going to zero till has made things more efficient and economical.



In addition to his own operation, Lyndon has also been involved on the state level, serving on the NDSA Board for six years and the North Dakota Stockmen's Association Board for four years. He has also been a junior advisor for the ND Simmental Association.

The friendly, upbeat and humorous attitude of this family has been a positive attribute to the North Dakota Simmental Association. Lyndon can easily put a smile on everyone's face and is a great ambassador for the breed.

Lyndon Hoiby, thank you for all your hard work promoting the Simmental breed in North Dakota. You and your wife, Shelly, and children, Paige and Levi, have worked very hard to improve your herd through the years. You represent the breed and the Association proudly.



*Senior of the Year Tyler Klain*

*Coloring Contest Winners*



## *Commercial Breeder of the Year*

### **Keith Johnson**

The commercial breeders in North Dakota are an important part of our seed stock business. Without the commercial breeders, there would be a limited number of successful bull sales in our state each year. The Simmental business has had its ups and downs, and it is because of the commercial breeders using Simmental in their herds that keep it going.

Each year the North Dakota Simmental Association recognizes a commercial breeder who is successful by using Simmental genetics. This year it is not just a breeder, but a family. A family who has been in the commercial cattle business since the early 1960's as a family partnership of three brothers that has since changed ownership to two of the sons.

What started out as a commercial Hereford herd of about 60 head and milking Holsteins, has now grown into a herd of 500 commercial Simmentals cows. At first, they were using halfblood Simmental bulls until they purchased their purebred Simmental genetics at the Valley City Winter Show in 1980. A majority of the Simmental cattle have been purchased from Bata Brothers at Adams, ND, for which they maintain a recipient herd.

The operation schedule consists of backgrounding the calves until they are about 800 pounds and selling in January. The replacement heifers are selected and the cull heifers are sold in February. By using CIDR's, they synchronize the replacement heifers the beginning of May and breed them to Red Angus bulls. As a result of their careful genetic selection, in January 2005, a group of heifers sold to a cattle feeder in Illinois and 95% of them graded Choice.

It takes a lot of hard work and dedication to continue a third generation family farm. The family of Johnson Stock Farm, at Sharon, has done an exemplary job of continuing the family tradition. Started by Norris Johnson in 1960, it was transferred to his sons: Keith, Wayne and Leslie where Keith primarily managed the cattle. In 2004, Wayne leased his cows and farmland to Keith's sons Chris and Jeremy. Currently the farm is operated by Chris, Jeremy and their father Keith.



Keith is very active on the state level, recently being elected to the North Dakota Stockmen's Association Board. He is also on the Vocational Advisory Board for the Northwood School and has been on the Central Livestock Board of Directors for 13 years.

The North Dakota Simmental Association would like to congratulate Keith and Wayne Johnson of Johnson Stock Farm as the 2006 Commercial Breeder of the Year!

# News from the ASA...

by Kelly Schmidt, ASA Field Representative

Greetings from the road! I hope everyone had a Merry Christmas and is having a great start to 2007! The Simmental business in my territory is as strong as ever. I am lucky to travel in ND, SD, NE, IA, MN, and WI where demand for Simmental genetics continues to rise. I have to say that I am very optimistic about the spring bull sale season. This past fall Simmental sale season consisted mostly of bred and open female sales. Sales in September and October showed once again, that the value in a Simmental and Simmental Foundation females continues to go up in the seedstock and commercial herd alike. Of course the jump in the corn market in October affected some sales thereafter. The sales that I attended in late October and after were still very successful with bred heifers selling very well. Open heifers were up and down from sale to sale. Territory, drought, and number of open heifers offered affected the value of the open heifers. But all in all, I was very pleased with the results of those female sales. Incidentally, the higher corn market caused a decrease in the price of feeder cattle at the market. They certainly are not bringing the prices they did a year ago, but are definitely acceptable as you look at ten year averages. The value of feeder cattle at the sale barn has remained at a level where it is very feasible for commercial cattlemen to look for new bulls. Again, I am looking forward to a good spring of Simmental sales.

The ASA is continuing to work on new programs and ideas to improve selection and creation of Simmental seedstock. We are in the second year of the Carcass Merit Program and the steers from the herds in Montana were weaned, weighed, and are on feed in Illinois. It will be exciting to see the results of another set of cattle on feed at University of Illinois. Solid understanding of carcass traits and feed efficiency is becoming more and more crucial in commercial herds and especially feed yards. Many of the progressive feed

yards are demanding cattle with carcass predictability. They want not only marbling, but also a muscle and yield grade improvement and this is where Simmental genetics play a huge role.

Also, I have to remind you about a few other things. The ASA's new SimChoice tagging program is up and running. Marty Ropp, Director of Field Services, talked in detail about this program in the last issue of this magazine. I encourage you to look back at that article and consider the benefits of that program. The Spring board meetings will be held in January at the National Western Stock Show. Contact your region's ASA trustees if there are any issues or topics you want to share with them. Your input matters and is taken into consideration when discussing improvements to the Association.

I want to congratulate the North Dakota Simmental Association on a great meeting and sale in December. The offering of cattle that the breeders put together was tremendous. The sale was a great success and was as strong in quality and value as any I had attended this fall. I also want to commend the membership of the NDSA for cooperation and unity that your Association has. Common goals, high quality cattle, and excited Association membership make events like that meeting and sale a lot more fun, not to mention, my job more fun too!

Best of luck to all of you as we head into the spring bull sale and calving season. I am looking forward to most of the bulls sales this spring. If I can help you at all regarding the American Simmental Association or locating Simmental cattle at a sale, please let me know. Take care and be safe.

Kelly Schmidt  
ASA Field Representative, North Central Region  
(406)599-2395, [kschmidt@simmgene.com](mailto:kschmidt@simmgene.com)



Bulls For Sale by Private Treaty

Also consigning Bulls and Females to the NW Select Simmental Sale in Stanley, ND on Saturday, March 10, 2007

Gary Sys  
9400 205th Avenue SW  
Douglas, ND 58735  
(701)722.3244



*SYS S638*

Fortune 500 x Sys Lori  
BW: 96 lbs WW: 784 lbs  
EPDs: 7 2.0 37 66 3 6 25



*SYS S623*

Nophalt x Fortune 500  
BW: 98 lbs WW: 786 lbs  
EPDs: 7 2.5 36 73 1 8 26



*SYS S624*

Hummer x Goldmine  
BW: 86 lbs WW: 701 lbs  
EPDs: 9 0.4 32 65 1 7 24



*SYS S626*

Hummer x Power Drive  
BW: 93 lbs WW: 769 lbs  
EPDs: 7 1.8 36 75 4 6 24



From Head to Tail ...

Maternal to Rail ...



# Klain Simmental Has You Covered!



## KSR Ranger 535S

March 8 • 96 lbs • 784 lbs • No Phalt x Sarge • Pld  
 CE BW WW YW MCE MM MW CW YG MB  
 4 2.8 47 84 3 5 29 10 .07 .11  
*Ranger is an exceptional ET bull out of a tremendous dam. He has one of the best red pedigrees and super EPDs to boot!*



## KSR Rock Solid 715S

March 5 • 97 lbs • 815 lbs • NightRider x Blk Cloud • Pld  
 CE BW WW YW MCE MM MW CW YG MB  
 6 2.8 50 88 5 8 33 4 -.04 0  
*Here's an impressive black power bull that was the highest indexing bull in his group. Check out his high performance numbers yet low BW EPD.*



## TTC Dream Up 257S

March 1 • 84 lbs • 725 lbs • DreamOn x Transf • Pld  
 CE BW WW YW MCE MM MW CW YG MB  
 9 2.4 46 75 2 3 26 -3.8 0 .08  
*This ranch favorite is impressive from all angles - smooth shouldered, big top and quarter and a wide birth-to-weaning spread.*

25<sup>th</sup> Annual Production Sale  
**Saturday,**

**Feb. 3, 2007**

1:00 pm • Turtle Lake, ND  
 Turtle Lake Weigh Station

*Selling:*

**56** Yearling Simmental Bulls  
 (20 red, 36 black)

**5** Yearling Angus Bulls

**12** Open Females



## KSR Total Package 219S

Feb. 24 • 96 lbs • 834 lbs • DreamOn x Lucky Break • Pld  
 CE BW WW YW MCE MM MW CW YG MB  
 10 -.2 37 63 3 3 21 -9.6 -.05 .11  
*Here is one of the deepest, thickest, solid black bulls you will find. Total Package has it all!*



## KF Integrity 633 (Angus)

Jan. 30 • 86 lbs • 770 lbs • Integrity x Neutron/Rito • Pld  
 CED BW WW YW CEM M %IMF UREA UFAT  
 6 3 33 66 6 24 2 .34  
*A very high-marbling, performance Angus bull sired by the great Integrity out of a Neutron-Rito dam. A super-thick, well-balanced Angus bull.*

35 Years Performance Testing  
 11 Years Ultrasound Testing

Bred Cows and Heifers Available  
 Private Treaty at the Ranch

*Uniformity from Us Creates Uniformity for You!*

# KLAIN SIMMENTAL RANCH



Durnell & Darcy Klain  
 (701) 448-2408

1364 20th St NW • Ruso, ND 58778

Leonard & Shirley Klain  
 (701) 448-2582

1999A 18th St NW • Turtle Lake, ND 58575

Tim & Tam Clark  
 (701) 448-2815

1999B 18th St NW • Turtle Lake, ND 58575

# KOEPLIN'S BLACK

TV

## SIMMENTALS

TV



518S

EPDs: 3 4 30 60 3 7 22

NOPHALT x  
BS PAYCHECK

Disposition  
next to none



106S

EPDs: 3 5 44 73 5 -10 2

SOLID STATE x  
MEYERS BLACK  
DAKOTA

3 ET brothers  
selling



904S

EPDs: 7 1 34 64 5 7 24

PREFERRED  
BEEF x  
LUCKY DICE

7 Preferred  
Beef sons  
selling



524S

EPDs: 5 2 33 66 2 7 24

NOPHALT x  
LUCKY BREAK

9 Nophalt  
sons selling



444S

EPDs: 0 4 37 70 3 6 245

POWERLINE x  
BDV FESTUS

2 Powerline  
sons selling



630S

EPDs: 4 2 34 69 2 5 22

HUMMER x  
BLACK  
ADVANTAGE

3 Hummer  
sons selling



060S

EPDs: 6 2 32 57 4 3 19

JBS N150  
Encore x  
BLACK  
PERFECTOR

5 JBS N150  
sons selling



528S

EPDs: 5 3 29 62 2 9 24

NOPHALT x  
LEACHMAN  
600U

Unbelievable  
disposition

### Annual Production Sale 2:00 PM CST

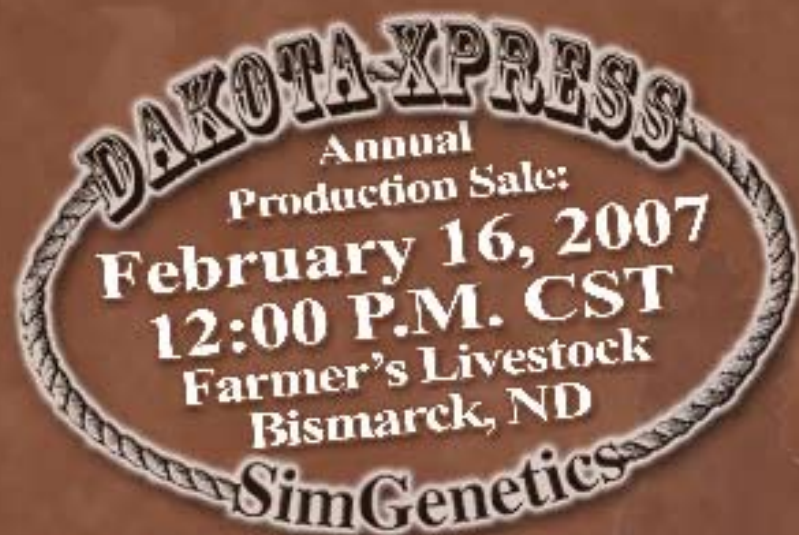
February 6, 2007 at Kist Livestock, Mandan, ND

Terry & Marci Koeplin  
104 4<sup>th</sup> Ave NE  
Elgin, ND 58533  
701-584-3292  
koeplinranch@westriv.com

*Where Friends Meet!*

Visitors always welcome  
at the Ranch!

Badger & Kristine Koeplin  
1144 College St  
Fargo, ND 58102  
701-367-5890  
badger.koeplin@ndsu.edu



Dream On x Goldmine  
Adj 205: 793 lbs. Marb: .14  
11 0 40 65 0 7 27

175 Simmental & Sim-Angus Bulls • 60 bred females • 45 open females

# Four Powerful Programs

One Common Goal...



Shamrock x NBI Stockhand  
Adj 205: 780 lbs. Marb: .14  
8 2 35 60 6 5 22



Red Rock x Goldrush  
Adj 205: 812 lbs. Marb: .18  
2 4 39 67 5 5 24



Remington Red Label x Americana  
Adj 205: 801 lbs. Marb: .16  
5 5 48 79 2 5 29



004 x Fortune 500 (Sim-Angus)  
Adj 205: 801 Marb: .37  
EPDs: 0 1 44 88 0 14 35



Sire: Above Par  
Bred to: Sagar Force Marb: -.31  
7 5 36 63 1 1 19



Sire: THSF Freedom 300N  
Bred to: LCC Major League Marb: .08  
5 8 35 67 1 9 21



Join us for our Annual Field Day: January 10, 2007 at  
Mandan Lake Simmental Ranch, Center, ND

Ron & Susie Pelton  
Halliday, ND (701) 548-8227  
E-mail: peltsimmi@pop.etel.com

Justin & Carrie Deckert  
Arenas, ND (701) 943-2477  
E-mail: dsreows@bektel.com

Kevin & Cudy Hansen  
Ryder, ND (701) 758-2571  
E-mail: hrsimmi@restel.net

Wade & Merri Staigle  
Center, ND (701) 794-3351  
E-mail: mandanlakranch@westriv.com



**BTS S607 — PB**  
 Dream On x Fortune 500  
 EPDs: 10 0 32 59 2 3 19



**BTS S620 — SimAngus**  
 KMK Alliance 6595 187 x RFS H91  
 EPDs: - 2 45 90 - 3 26

# Bull Sale

## February 12, 2007

1:00 PM CST

Valley City, North Dakota  
 Winter Show Building



**BTS S626 — SimAngus**  
 Cherokee Canyon x ER Black Cisco 532C  
 EPDs: - -1 34 60 - 0 17



**THSR S603 — SimAngus**  
 SAV 180 Traveler 004 x SAC Mr MT 73G  
 EPDs: - 0 36 71 - 7 25



**THSR S647 — PB**  
 Dream On x Fortune 500  
 EPDs: 10 2 41 70 2 6 26



**THSR S630 — PB**  
 Dream On x ER Black Cisco 532C  
 EPDs: 10 0 34 59 3 8 25



**PSR 5S — SimAngus**  
 BJR Make My Day 981 x GW Lucky Break  
 EPDs: - -3 21 47 - 7 17



**Also Selling  
 a Select  
 Group of  
 SimAngus  
 Heifers**

**H H H H**  
**TRIPLE H SIMMENTALS**  
 Jerry, Kelly & Bryan Hanson  
 11010 County Rd 26 • Hannaford, ND 58448  
 701-769-2241 • 701-733-2501

**BLACK TIE SIMMENTALS**

Producing Quality Simmental Stock

Patrick Thorson  
 16644 51st St. SE  
 Kindred, ND 58051  
 701-371-8230

Tim & Tam Clark  
 1999B 18th St NW  
 Turtle Lake ND 58575  
 701-448-2815

www.blacktiecattle.com

**Pherson Farm**

Dennis, Denny, Mac & Lenny Pherson  
 Rutland, ND 58067  
 701-724-6218  
 701-724-6457